



Resurrection Catholic Parish

Becoming Disciples of Jesus and Stewards of God's Gifts

Fifth Sunday in Ordinary Time February 8 & 9, 2025



**“Do not be afraid;
from now on you will be
catching men.”**

Luke 5:10

First, Get Out of the Boat

In the mid-1990s, while serving as the Director for Youth Ministry for the Diocese of Green Bay, we hosted a youth conference with the title “If You Want To Walk On Water You Need to Get Out of the Boat.” The gist of the keynote presentation was that if we really want to make a difference in this world, if we want to bring on the Reign of God a little more in our lifetime, then we need to take the risk of faith and get out of the boat, get out of our comfort zone.



In the readings for this weekend, we have three great examples of people who got out of the boat to answer the call of faith. In the first reading Isaiah considers himself a sinful man living in the midst of a sinful people. He then has an experience of the presence of God in the temple. A seraphim, or angel, places a burning ember from the temple fire on Isaiah’s tongue. At this Isaiah hears the voice of the Lord saying, “Whom shall I send? Who will go for us?” “Here I am,” I said; “send me!” With this he was able to become a prophet, a person who calls the people to a right relationship with God, even in the midst of the Babylonian Exile.

In the second reading St. Paul is recounting all of the people who the Lord appeared to after the Resurrection, calling them to ministry in His name. Christ has called Peter, the other apostles, and lastly Paul, who considers himself unworthy of discipleship after his persecution of the Jews. Paul states:” But by the grace of God I am what I am, and his grace to me has not been ineffective. Indeed, I have toiled harder than all of them; not I, however, but the grace of God that is with me.” With this newfound confidence Paul is able to spread the Good News to the known world of the time.

Lastly in the Gospel reading from St. Luke, we have the memorable account of Peter and the guys out fishing and unable to catch a thing. With the appearance of Jesus, the nets are filled to capacity, nearly bursting. Jesus makes the famous pronouncement to Peter that he will become a fisher of people rather than fish when he answers the call to discipleship and eventual leadership.

Continued on page 2

**333 Hilltop Drive
Green Bay, WI 54301
920-336-7768**

Mass Schedule
Saturday 4:00 PM
Sunday 8:30 AM & 10:30 AM
Monday-Friday 8:05 AM

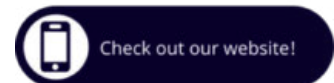
Live Streaming Masses
www.gbres.org/live

Reconciliation
Saturday 3:00 - 3:30 PM
or By Appointment

Adoration
Thursday Following Daily Mass


Parish Office Hours
Monday-Thursday
8:30 AM - 3:00 PM
Other Times by Appointment

STAY CONNECTED



www.gbres.org

Emails/Text Alerts
Text GBRES to 84576 or
www.gbres.org/contactinfo

 [gbresurrection](https://www.facebook.com/gbresurrection)

Please ask an usher about our accessibility options and low gluten hosts.



Tony's Article Continued...

So what about us? How are we being called to get out of the boat, to answer the call to discipleship in this world, which needs the further dawning of the Reign of God? Maybe as we step outside of the boat, outside of our comfort zone, we will not actually dash across the surface of the water on our first try. Rather, it might take baby steps outside of the boat as we gain our balance and our ability to walk. A conversation with a person who has different political views might be a good start. Or, chatting at the grocery store with a person who looks or speaks differently from us. Having a meal across the table from someone at the homeless shelter. Sitting next to a new person at church. All are ways to get outside of the boat and walk in discipleship.

Do you want to walk on water?
Jesus invites us to get out of the boat!

Tony Pichler

Luke: The Story of Salvation Fulfilled

During 2025 we will predominantly hear Scripture passages from St. Luke's Gospel each Sunday. This course, continuing for eight Tuesdays, explores the life and teachings of Jesus of Nazareth as told by St. Luke the Evangelist. As we journey through Luke's Gospel account, we will encounter Jesus in a new way and discover how his teachings fit into our lives today.

Tuesdays, January 7-February 25
8:45-10:00 a.m. and 6:30-7:45 p.m.
Gathering Area

For more information please contact
Tony Pichler in the parish office.

Taizé Prayer

Taizé Prayer is a meditative prayer form.
It is filled with song, Scripture, and silent meditation.

Those who attend regularly find a profound peace and tranquility in this style of prayer. Taizé Prayer helps you to calm yourself from the outside world and to open yourself to the Holy Spirit.



Monday, February 10
6:30 PM

In Church and Online at www.gbres.org/live

Chef Off



THREE TEAMS ~ ONE WINNER

VOTE FOR THE BEST APPETIZER, MAIN COURSE, AND SALAD

Friday, February 14 | \$10 per person
12:00 Noon | www.gbres.org/chefoff

Mass Intentions & Parish Activities

Saturday, February 8

8:00 AM Walk to Mary Training (Voyageur Park)
3:00-3:30 PM Individual Reconciliation (DC)
4:00 PM Mass ☩ Carolyn Zawacki

Sunday, February 9

Fifth Sunday in Ordinary Time
World Marriage Day

8:30 AM Mass ☩ Robert Gorzek & Casey Zdziarski
10:30 AM Mass ☩ Members of Resurrection Parish

Monday, February 10

Memorial of St. Scholastica

8:05 AM Mass ☩ Jim Cygan
8:30-10:00 AM Indoor Walking (FAC)
1:00-3:00 PM Indoor Walking (FAC)
6:30 PM Taize Evening Prayer

Tuesday, February 11

8:05 AM Mass ☩ Jan Henning
8:45 AM Luke: The Story of Salvation Fulfilled (GA)
1:00 PM Parish Shawl Ministry (PH1)
6:30 PM Luke: The Story of Salvation Fulfilled (GA)
7:00 PM Knights of Columbus (PH)

Wednesday, February 12

6:30 AM Men's Small Group Discussions (PH)
7:00 AM Inclusive Small Group Discussion (DC)
8:05 AM Mass ☩ Lyle Mangin
9:00 AM Disciples Reading Group (PH2)
1:00 PM Sheepshead (GA)
5:00 PM GOD Meal (GA)
6:00 PM GOD
6:00 PM Pickleball (FAC)

Thursday, February 13

8:05 AM Mass ☩ Alice Zeller
8:30-10:00 AM Indoor Walking (FAC)
6:30 PM PRAYSE Choir Practice (C)

Friday, February 14

Memorial of Sts. Cyril & Methodius
Valentine's Day

8:05 AM Mass ☩ Marnie D. Mackin
and James Martin
8:30-10:00 AM Indoor Walking (FAC)
12:00 PM Chef Off (GA)
1:00-3:00 PM Indoor Walking (FAC)

Saturday, February 15

8:00 AM Walk to Mary Training (Voyageur Park)
3:00-3:30 PM Individual Reconciliation (DC)
3:15 PM Men's Choir Practice (C)
4:00 PM Mass ☩ Eric Laes & Genevieve Graume

Sunday, February 16

Sixth Sunday in Ordinary Time

8:30 AM Mass ☩ Members of Resurrection Parish
10:30 AM Mass ☩ Mary Boerschinger
5:30 PM Alpha (GA)

Please pray for the family and friends
of our parish family member

Gary Tomcheck

October 31, 1943 - February 2, 2025

May God's promise of new life comfort them all.



Weekly Adoration & Rosary

Every Thursday (except holidays)

8:30-9:30 AM

Following Daily Mass

Silent Meditation and Rosary

Enrich your spirit in private conversation with Christ, present on the altar, in glory and peace.



Generations of Disciples Night

All children and adults are welcome to a night of growing in faith.

Wednesday, February 12

5:00-5:45 PM Pizza Served
6:00 PM Session Begins



Afternoon of Sheepshead Card Games

Play with a friendly group of sheepshead players.
Popcorn and water provided.

Wednesday, February 12
1:00 - 3:00 PM in Gathering Area



St. Matthew Men's Club

Buffet Style Chicken Dinner

Cash Bar
Silent Auction
And More
All are welcome!



March 6th
Swan Club
Doors Open at 4:30 PM
Dinner at 6:00 PM

Proceeds to Benefit Local Charities
Tickets are \$25

Must be purchased in advance from any Men's Club Member
or at the St. Matthew parish office.
920-435-6811

Blizzard Faith & Family Day

Sunday, April 6
3:05 PM
Resch Center

Come and enjoy an exciting day of indoor football with the Green Bay Blizzard and Resurrection on Faith & Family Day! Tickets are just \$15, and \$5 from each ticket will be donated back to Resurrection to support our Youth Activities.

The top 10 groups in ticket sales will share \$10,000 from Thrivent Financial! Plus, don't miss the special half-time performance by Tenth Avenue North.



Purchase your tickets online at www.gbres.org/blizzard or scan the QR code. Let's come together for a day of fun, faith, and family!

Save the Date!

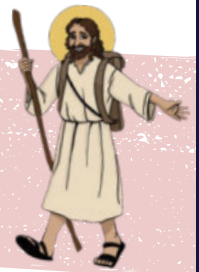
Resurrection Golf Outing 2025

Sunday, June 22
Noon Shotgun Start
Midvallee Golf Course, De Pere
Start forming your team now!



Vacation Bible School Returns July 28 - August 1

Children ages 4 through entering 4th grade are invited to embark on an exciting five-day journey with Jesus, entering into the liturgical seasons and learning the significance of the season through the life of Christ.



Adult, high school, and middle school volunteers are needed.

Register & volunteer now at
www.gbres.org/vbs

Ongoing Events

Indoor Pickleball in Gym

Every Wednesday
6:00 - 8:00 PM
All ages and skill levels
welcome

Indoor Walking in Gym

Now until April 30
Mon, Thurs, Fri - 8:30 to
10:00 AM
Mon, Fri - 1:00 - 3:00 PM

The Maid and the Socialite Walking Tour

Hosted by Lynda Drews, local author

Sunday, June 29

2:30-4:30 p.m.

Cost: \$18

(Proceeds benefit the Brown
County Historical Society)



The walk is approximately two miles in duration. Please note this if you have physical limitations that would preclude you from participating.

Register online on the parish website
or contact the office.

For more information contact Tony Pichler at
tpichler@gbres.org or 920-336-7768

Supporting Women in Crisis Pregnancies



The Alexandrina Center of Green Bay provides free and confidential pregnancy services for women and men seeking help.

They are looking for volunteers to pray for women in crisis pregnancies, to sort, organize, and pack donations for distribution, and to mentor and work with clients seeking support.

*For questions or to volunteer, call parishioner
Ellen Tilleman at (920) 737-3312*



Resurrection continues to collect non-perishable food donations for the Hope Center Pantry.

Donations can be brought to any of the church entrances or Door #9 of the Parish Office.

HEALING YOUR GRIEVING HEART

A support group for those grieving the loss of a loved one.



Begins Thursday March 6
Every Thursday through April 3
6:30-8:00 PM



This group, sponsored by Resurrection and St. Matthew parishes, will meet at Resurrection Parish

For more information or to register, contact Sheila De Luca sheiladeluca63@gmail.com or 920-217-6259 or Ann Froelich annfroelich@gmail.com or 920-366-7605

Sleep in Heavenly Peace Book Drive

Resurrection continues to collect new children's books to support Sleep in Heavenly Peace. A collection box is located near the main church doors, and in the Door #9 vestibule, the office door facing Delahaut.



Sleep in Heavenly Peace is an organization dedicated to building and delivering bunk beds to children in need. Mackenzie, a Resurrection youth, began collecting books because she believes every child that receives a bed should also receive a bedtime story.

Parents of the LGBTQIA+ Community



Do you have questions about parenting your LGBTQIA+ youth or adult child?

Looking for a safe place to talk within the confidentiality of a group setting?

Would you like to be able to share your story and experiences?

Consider joining our small group where we listen and share resources as we walk together on our journey.

Contact the parish office at 920-336-7768 ext 127, Dcn Kevin DeCleene at kdecleene@gbres.org, or Terri Gulyas at tsgulyas@gmail.com



WALK TO MARY

Pilgrimage of Hope

Join Resurrection in preparation for the 21-mile Walk to Mary event on Saturday, May 3.

Walk and Pray as a Group on Saturdays, Feb 8 - Apr 26 at 8:00 AM at Voyageur Park

LEARN MORE AT WWW.GBRES.ORG/WALK



Reporting Abuse

If you know of an incident of sexual abuse of a person who is now under the age of 18 by a priest, deacon, employee, or volunteer, IMMEDIATELY CALL THE CIVIL AUTHORITIES AND THEN THE DIOCESE.

If the person was a minor but is now an adult, please contact:

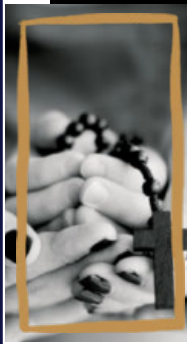
Office of Safe Environment
Diocese of Green Bay

920-272-8174 or 1-877-270-8174

We always encourage you to report the incident to civil authorities



Do You Receive the CHURCH OF THE HOME?



Every Saturday, Resurrection posts the *Church of the Home*. It includes resources to help grow your faith and keep you informed as to what is happening within your parish family.

You can access the Church of the Home via our website, app, Facebook, or email.

To sign up to receive the email, go to gbres.flocknote.com



Res Podcasts

Tune in to Resurrection's Podcasts.

All podcasts are available on Spotify, Apple Podcasts, YouTube, or on the websites below.

In each episode of *Revealed*, we explore the sacred in the ordinary through stories of faith, resilience, and God's presence in everyday life. www.gbres.org/podcast

Engage in spiritual reflection with the *Auditio Divina Podcast*. Prayerfully listen to songs across multiple genres. www.gbres.org/ad



Support families with infants and toddlers. Details can be found in the baby crib in the Greeting Area or at www.gbres.org/lovelife

The mission of Love Life is to provide Christian communities with the opportunity to support new life and demonstrate Gospel values through service and the sharing of resources.

Prayer Shawl Knitters



The Prayer Shawl Ministry meets in person on the Second Tuesday of the month at 1:00 in the Parish Hall.

The Prayer Shawl Ministry gathers together to knit and crochet shawls. Each shawl is prayed over before it is given to those who are in need of comfort and support. Contact the parish office for more information on joining this ministry or receiving a prayer shawl.

Weekly Sacrificial Giving



January 28 - February 3

Envelope Collection	\$10,718.00
ACH/Online Giving	\$8,378.02
Loose	\$511.80
Votives	\$62.00
Total for the Week	\$19,669.82



Year to Date Sacrificial Giving
July 1 - January 31, 2025

YTD Actual	\$655,767
YTD Budget	\$605,000
YTD Variance	+\$50,767

Church Tax Statements were mailed out on January 24th. If you do not receive one or have questions, please contact Bill Campion at 920-336-7768.

Thank You for your support.

This Valentine's Day, Show Mother Earth Some Love!

from the Care for Creation Committee

Did you know that Valentine's Day creates tons of waste? Literally! The International Council on Clean Transportation estimates that just transporting flowers for Valentine's Day burns approximately 30 million gallons of fuel, emitting approximately 396,000 tons of carbon dioxide into the atmosphere. And that's only the beginning.

But you don't have to sacrifice sentiment to make your Valentine's Day environmentally sustainable. If you're buying flowers, look for locally grown, in-season flowers from small-scale producers, or buy a potted plant for a gift that keeps on giving. If you're buying candy, look for brands that use minimal or recyclable packaging, or bake the dessert yourself for a handmade gift. If you're buying jewelry, consider buying a pre-owned piece; if buying new, look for ethically sourced options.

You can also avoid physical gifts altogether by giving the gift of an experience! Go ice skating, attend a live performance, or enjoy a movie night at home. Make memories—not waste—that will last forever!

Resurrection Playgroup

Bring your little ones and join us for playtime, a craft and coffee at the Resurrection Playgroup. **All are welcome!**

Meets every other
Friday



February 21
9:30 - 10:45 AM
in the Gathering Area

Please contact Sarah LeSage at slesage@gbres.org for more information.



Please prayerfully consider
a gift from the heart to the
2025 Bishop's Appeal!



Please give generously at
www.catholicfoundationgb.org/give

Mardis Gras

Tuesday, March 4
6:30-8:30 p.m.
Gathering Area



Cost:
Only \$20
Per Person

Enjoy an evening of music, food, drinks, and New Orleans style fun as we celebrate Mardi Gras before entering into the season of Lent. Bent Gras (the name is changed to celebrate the day!), the popular bluegrass band from De Pere, will be the featured entertainment. A short presentation on Mardi Gras, as well as Lenten practices, will round out the evening.

Tickets are on sale in the parish office and online at www.gbres.org/mardigras. Registration deadline is Wednesday, February 26. Reserve now as space is limited!

Contact Resurrection

To connect with a parish associate, please email or call the parish office at 920-336-7768. Phone extension numbers are listed where applicable.

Bill Campion	128	bcampion@gbres.org	Finances
Gerry Faller	123	gfaller@gbres.org	Long-Term Planning, Buildings & Grounds, Bequests
Karolyn Efferson	122	kefferson@gbres.org	Grades 4K-7 Faith Formation, Sacramental Prep, Family Life, Health & Wellness
Katie McAllister	129	kmcallister@gbres.org	Technology, Bulletin, Media
Francis Dempsey	221	fdempsey@gracesystem.org	Father Allouez School Principal
Kevin DeCleene	127	kdecleene@gbres.org	Deacon, Operations, Pastoral Care, Baptism, Marriage, Stewardship
Glenn Champeau		gchampeau@gbres.org	Maintenance and Custodial
Jane Schueller		jschueller@gbres.org	High School Confirmation Prep
Jordan Joseph		youth@gbres.org	Middle and High School Youth Activities
Madeline Bohan		youth@gbres.org	Middle and High School Youth Activities
Michele Becker		mbecker@gbres.org	Music & Choir Direction
Mike Grzeca		m49g@att.net	Deacon, Spiritual Listening
Paul Becker		pbecker@gbres.org	Maintenance and Custodial
Roger Vandervest		rogervandervest@gmail.com	Deacon, Spiritual Direction
Rudy Hernandez		rhernandez@gbres.org	Grades 8 & 9 Faith Formation
Sarah LeSage	130	slesage@gbres.org	Administrative Assistant, Membership Data and Records, Safe Environment
Fr Tom Reynebeau	121	frtom@gbres.org	Pastoral Care, Hospital & Home Visits, Sacrament of the Sick
Tony Pichler	125	tpichler@gbres.org	Adult Enrichment & Mission Outreach
Wayne Efferson	124	weferson@gbres.org	Liturgy

Oak Street Cafe
 Open Daily 7am - 1pm
 926 Oak Street • 347-0508

Care for All Ages, Inc
 Assisted Living and Childcare
 "WHERE YOUNG AND ELDERLY COME TOGETHER"
 1308 S. Norwood Ave
 Green Bay, WI 54304
 (920) 432-8119 Assisted Living
 (920) 432-3993 Childcare
 www.careforallages.com

Geimer & Orcutt
 - LAW, S.C. -
 WILLS, TRUSTS, ESTATE PLANNING
 A Family Firm Since 1990
 Rober H. Geimer
 Mary Rose (Geimer) Orcutt
 *Certified as an Elder Law Attorney by the National Elder Law Foundation
920-432-4433
 2333 Riverside Dr. • Green Bay, WI 54301

MEDIATION CENTER
 OF GREATER GREEN BAY
 Advocating compromise since 1998
920-438-7067
 director@mediationggb.org
 Vicki Marotz, Executive Director

LAMERS
 The Passenger Professionals
BUS DRIVERS NEEDED
\$23.50/hr & bonuses up to \$2,400
 GoLamers.com/careers • 496-3600

The UPS Store
 PLEASE SUPPORT OUR PARISH
 SHIPPING EXPERTS FOR YOUR NEEDS
 1794 Allouez Ave, Suite C
 Green Bay, WI 54311
 (920) 884-6681
 www.greenbay-wi-4170.theupsstorelocal.com

The Breakfast, Lunch & Dinner Hot Spot of De Pere
The Nicolet Restaurant of DePere
 Est. 1963
 Check out our new menu items and coffee drinks! Daily
 525 Reid St. 920.336.8726
 Sun 7am-4pm • Mon-Thur, Sat 6am-4pm
 Fri 6am-7pm

Law Firm of CONWAY, OLEJNICZAK & JERRY, S.C.
 Phone: (920) 437-0476 Web: lcojlaw.com

Discover the Catholic Difference
 Rely on the Knights of Columbus to help protect your family's future. A name you know and trust. An organization you can believe in.
 Contact me today to learn more about our products
James J. Patz, FICF
 Field Agent
 920-264-8745
 james.patz@kofc.org

SINKLER HEATING & COOLING, INC.
 • Commercial • Residential
 • Industrial • 24 Hour Service
1-920-465-6863
 1816 Allouez Avenue • Green Bay, WI 54311

THE RITE PLACE SUPPER CLUB Bar & Grill
 BANQUETS & FUNERAL DINNERS, DAILY DINING
469-0055
 1580 Bellevue Green Bay Parishioner Owned

PEARLE VISION
 De Pere
 Locally Owned
 (920) 347-8998
 www.pearlevision.com/depere

Majestic Tile Co
 Serving your ceramic tile contracting and retail needs for over 60 Years!
 1308 Bellevue Street • Green Bay
 • 920-468-0854 •
 www.majestictileco.com
 Kim Thompson- Parishioner

K. KELLY, INC.
 HEATING • COOLING • PLUMBING
 RADON SYSTEMS
 No Cost Estimates & 5% OFF Any SERVICE only with this ad
 Kevin Kelly • Parish Member
 2057 Bellevue St., Green Bay, WI 54311
 (920) 469-3500 • www.kkellyinc.com

Dan Popkey's De Pere Tax
 Full Tax Service Same Day E-Filing Returns
 Book online: www.meetme.so/danpopkey
Historic Post Office Building
 416 George Street, Suite 103, De Pere
 920-621-8126
 danielpopkey@gmail.com • danpopkeysdeperetax.com

BRABAZON LAW OFFICE, LLC
 Voted Best Law Firm
920-494-1106 | www.brabazonlawoffice.com
 • Estate Planning • Personal Injury • Family Law • Criminal Law

Attorney Shane L. Brabazon
 Owner/Managing Attorney
 221 Packerland Drive
 Green Bay, WI 54303

Asphalt Seal & Repair
 Professionals In:
 • Asphalt Patching
 • Crack Sealing
 • Sealcoating
 Bonded & Insured
 (920) 338-0130
 Check us out at
 www.asphaltsealandrepair.com
 2077 Enterprise Drive, De Pere, WI 54115

MASS APPEAL
 Est. 1972
 Veteran Owned
 Your Logo IS Our Business!

SCREEN PRINTING • EMBROIDERY PROMO PRODUCTS
(920) 469-2000
 sales@massappealinc.com
 www.massappealinc.com
 1566 Lineville Rd, Green Bay, WI 54313

Honoring and Remembering with Care.
COTTER
 Funeral & Cremation Care
 (920) 336-8702 | cottenfuneralhome.com

CMS Retirement Income Planning LLC
 YOUR ARCHITECT FOR YOUR FINANCIAL FUTURE
 Would you give me the privilege of helping you make great decisions with your money?
Craig Siminski
 CFP®, CLU, CASL, CPA, AEP®
 Financial Planner
 Parishioner
(920) 569-8363
 craig@cmsretirement.com
 cmsretirement.com
 2050 Riverside Dr., Green Bay, WI 54301
 Over 25 Years Investment Experience
 Securities and investment advisory services offered through Osac Wealth, Inc, member FINRA/SIPC. Osac Wealth is separately owned and other entities and/or marketing names, products or services referenced here are independent of Osac Wealth.

BONNIE VAN VONDEREN, REALTOR®
COLDWELL BANKER REAL ESTATE GROUP
 bvanvonderen@coldwellhomes.com
 920.621.0982 Cell
 920.469.5566 Office

¿QUIERES PROTECCIÓN, PERMISO Y PAPELES®?
 ¡Yo quiero que el próximo MILAGRO SEA EL TUYO!™
 ESCANEA y AGENDA tu consulta.
¡LAMA AHORAA! (608) 259 1063
 Abogada Alexandra
 Abogada de Inmigración

ALLOUEZ CATHOLIC CEMETERY
 Save up to thousands and give your family peace of mind by pre-planning.
 2121 Riverside Drive • (920) 432-7585
 www.allouezcatholiccemetery.com

LIZER LAWN CARE & IRRIGATION
 The Grass is Always Greener on Our Side of the Fence
(920) 468-1604 • GREEN BAY
 www.lizerlawn.net

BENO PLUMBING
 Since 1926
468-4777
 "Plumbing That Pleases"
 www.benoplumbing.com

SUPPORT OUR ADVERTISERS!

¿QUIERES PROTECCIÓN, PERMISO Y PAPELES®?
 ¡Yo quiero que el próximo MILAGRO SEA EL TUYO!™
 ESCANEA y AGENDA tu consulta.
¡LAMA AHORAA! (608) 259 1063
 Abogada Alexandra
 Abogada de Inmigración

LET'S GROW YOUR BUSINESS
 Place Your Ad Here and Support Our Parish!
CONTACT ME Rob Witte
 rwitte@4LPi.com
 (800) 950-9952 x2501

RYAN FUNERAL HOME & CREMATORY
 920-336-3171
 DePere, WI
 Dominic Maino
 Apprentice Funeral Director
 Parishioner
 www.ryanfh.com

MAYFLOWER GREENHOUSE
 726 Airport Dr. • Hobart
920-869-2045
 Chris Beno, Parishioner

McCormick Assisted Living
 A Ministry of St. Paul Elder Services, Inc.
 A Catholic Assisted Living Community
920-437-0883

AMERICAN FAMILY INSURANCE
 Kierstin Thompson Agency, LLC
 1445 North Rd, Ashwaubenon WI, 54313-5725
(920) 469-1200